

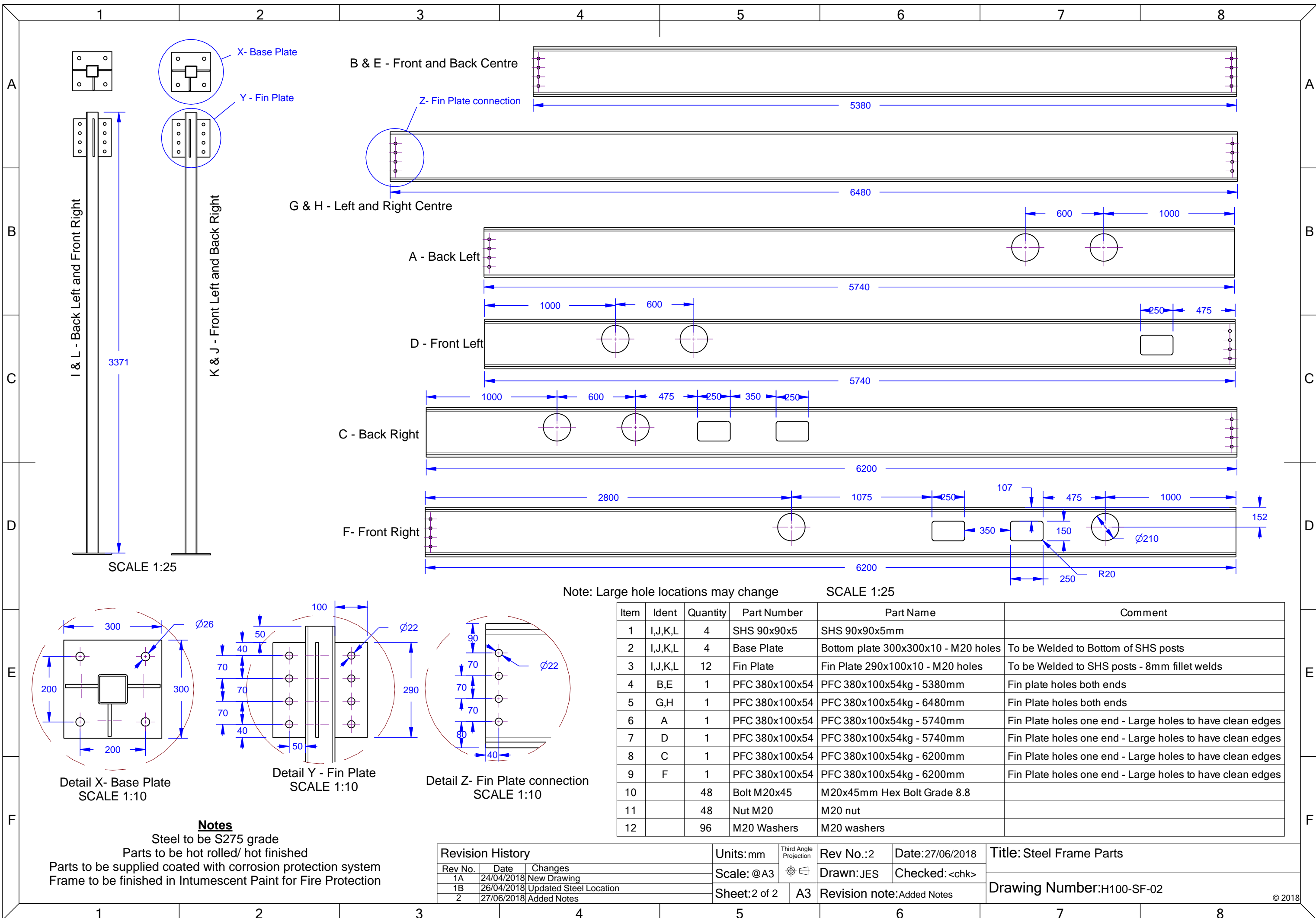
House Steel Frame

Revision History		
Rev No.	Date	Changes
1A	24/04/2018	New Drawing
1B	26/04/2018	Updated Steel location
2	27/06/2018	Added Notes

Units: mm	Third Angle Projection	Rev No.:2	Date:27/06/2018
Scale: @A3		Drawn:JES	Checked:<chk>
Sheet: 1 of 2	A3	Revision note:Added notes	

Title: Steel Frame
Drawing Number:H100-SF-01

Notes
 Steel to be S275 grade
 Parts to be hot rolled/ hot finished
 Parts to be supplied with corrosion protection system
 Frame to be finished in Intumescent Paint for Fire Protection



B & E - Front and Back Centre

G & H - Left and Right Centre

A - Back Left

D - Front Left

C - Back Right

F - Front Right

I & L - Back Left and Front Right

K & J - Front Left and Back Right

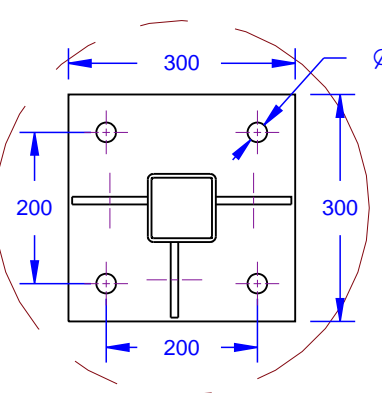
X - Base Plate

Y - Fin Plate

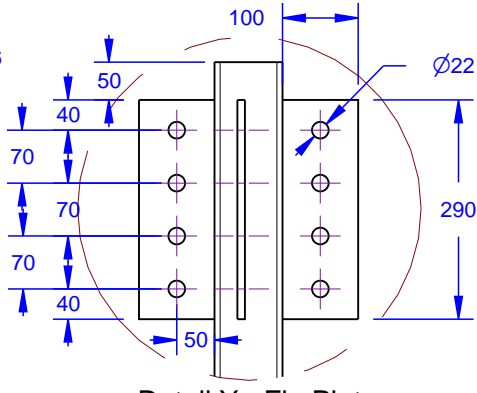
Z - Fin Plate connection

SCALE 1:25

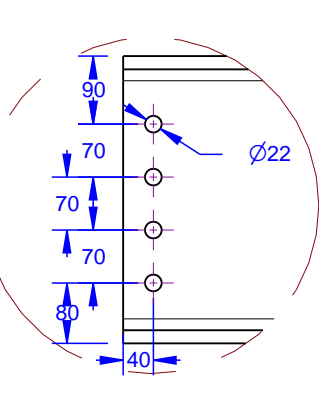
Note: Large hole locations may change SCALE 1:25



Detail X - Base Plate
SCALE 1:10



Detail Y - Fin Plate
SCALE 1:10



Detail Z - Fin Plate connection
SCALE 1:10

Item	Ident	Quantity	Part Number	Part Name	Comment
1	I,J,K,L	4	SHS 90x90x5	SHS 90x90x5mm	
2	I,J,K,L	4	Base Plate	Bottom plate 300x300x10 - M20 holes	To be Welded to Bottom of SHS posts
3	I,J,K,L	12	Fin Plate	Fin Plate 290x100x10 - M20 holes	To be Welded to SHS posts - 8mm fillet welds
4	B,E	1	PFC 380x100x54	PFC 380x100x54kg - 5380mm	Fin plate holes both ends
5	G,H	1	PFC 380x100x54	PFC 380x100x54kg - 6480mm	Fin Plate holes both ends
6	A	1	PFC 380x100x54	PFC 380x100x54kg - 5740mm	Fin Plate holes one end - Large holes to have clean edges
7	D	1	PFC 380x100x54	PFC 380x100x54kg - 5740mm	Fin Plate holes one end - Large holes to have clean edges
8	C	1	PFC 380x100x54	PFC 380x100x54kg - 6200mm	Fin Plate holes one end - Large holes to have clean edges
9	F	1	PFC 380x100x54	PFC 380x100x54kg - 6200mm	Fin Plate holes one end - Large holes to have clean edges
10		48	Bolt M20x45	M20x45mm Hex Bolt Grade 8.8	
11		48	Nut M20	M20 nut	
12		96	M20 Washers	M20 washers	

Notes
 Steel to be S275 grade
 Parts to be hot rolled/ hot finished
 Parts to be supplied coated with corrosion protection system
 Frame to be finished in Intumescent Paint for Fire Protection

Revision History		
Rev No.	Date	Changes
1A	24/04/2018	New Drawing
1B	26/04/2018	Updated Steel Location
2	27/06/2018	Added Notes

Units: mm	Third Angle Projection	Rev No.: 2	Date: 27/06/2018
Scale: @A3		Drawn: JES	Checked: <chk>
Sheet: 2 of 2	A3	Revision note: Added Notes	

Title: Steel Frame Parts
 Drawing Number: H100-SF-02
 © 2018