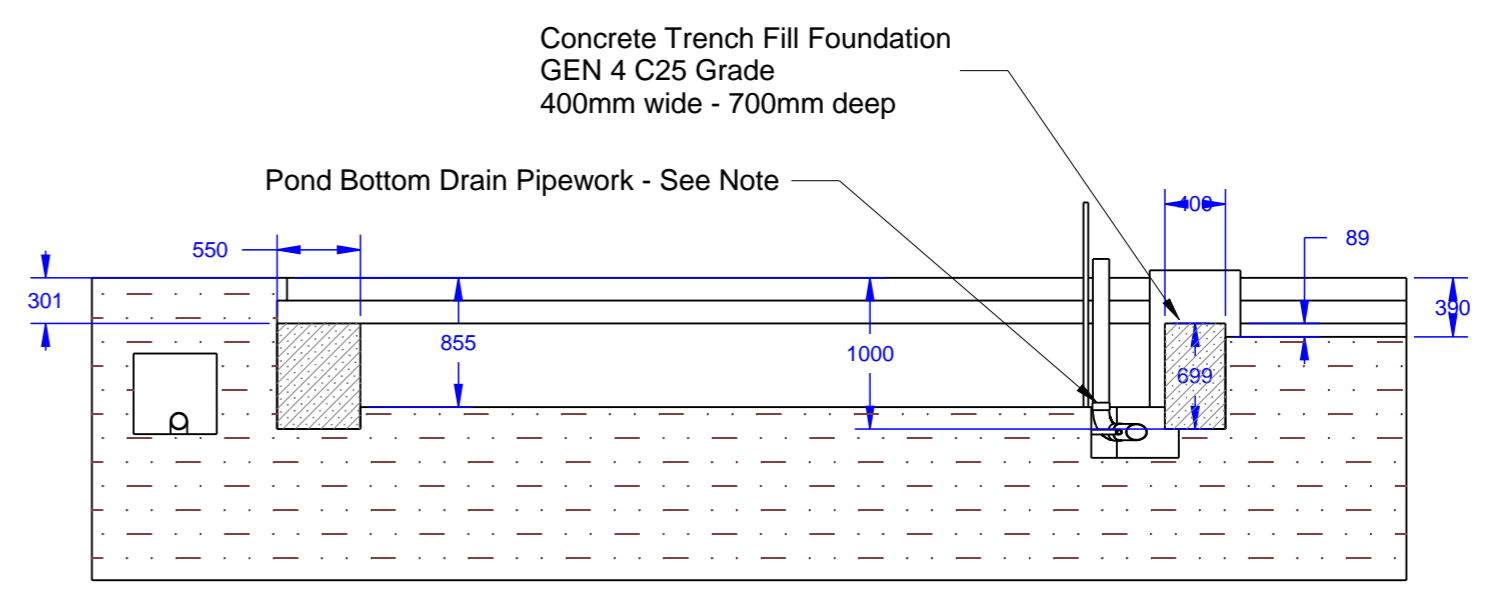
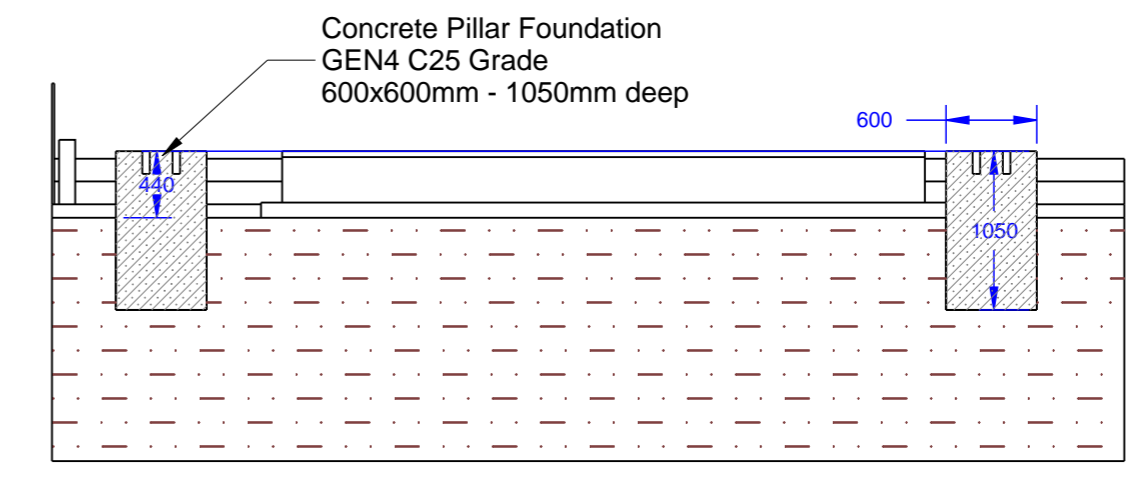


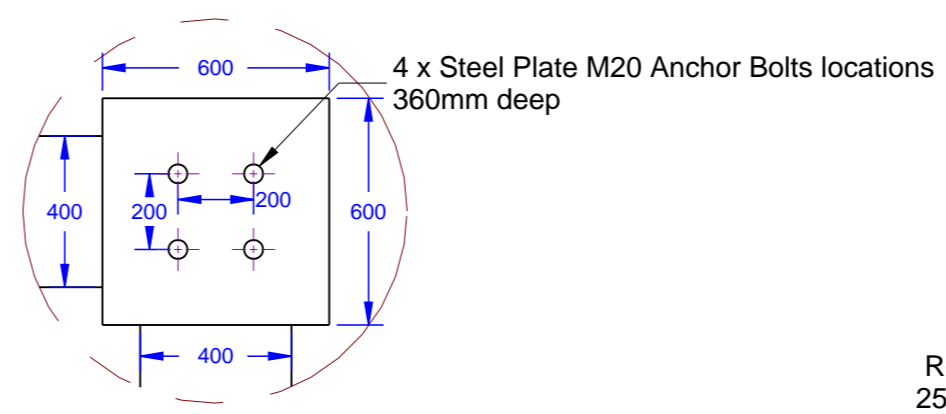
SCALE 1:100



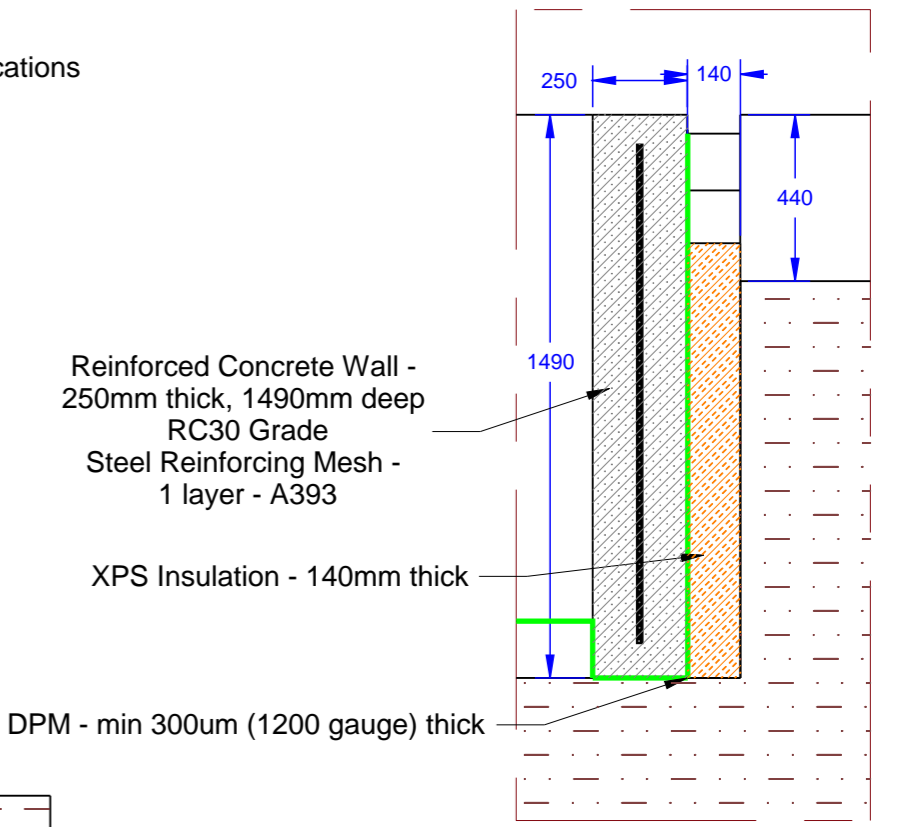
Section A - Plant Room-A - Plant Room  
SCALE 1:50



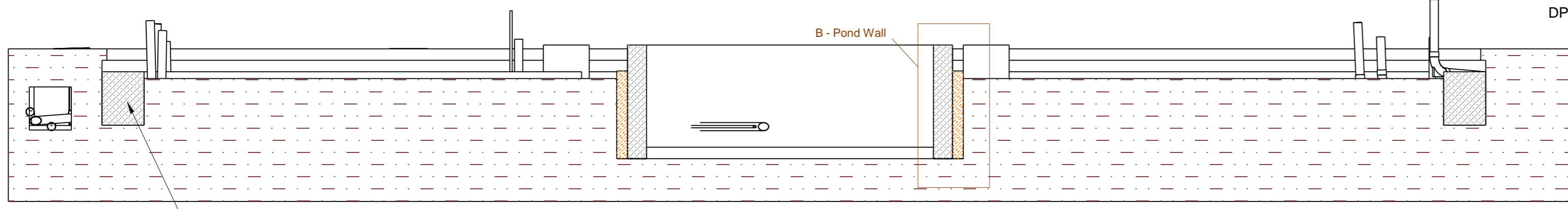
Section C - Steel Frame Pillars-C - Steel Frame Pillars  
SCALE 1:50



Detail A - Steel Frame Pillar  
SCALE 1:20



Detail B - Pond Wall  
SCALE 1:20

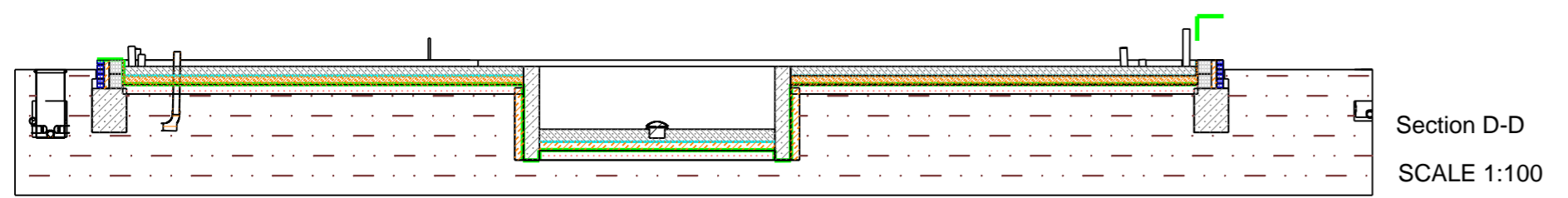
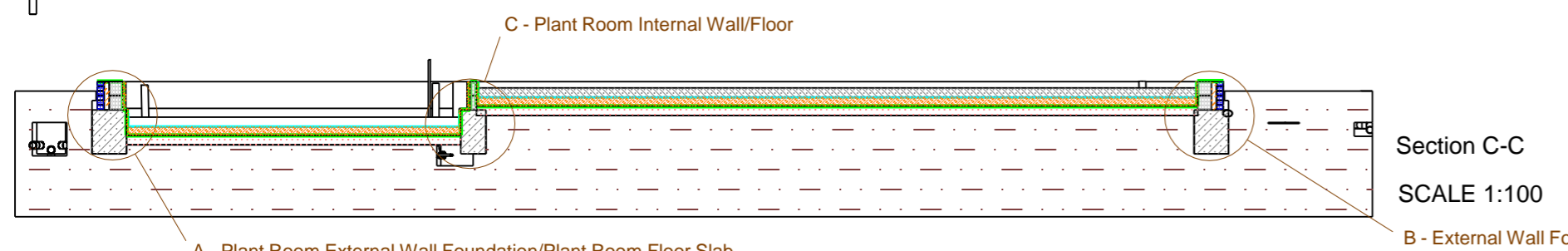
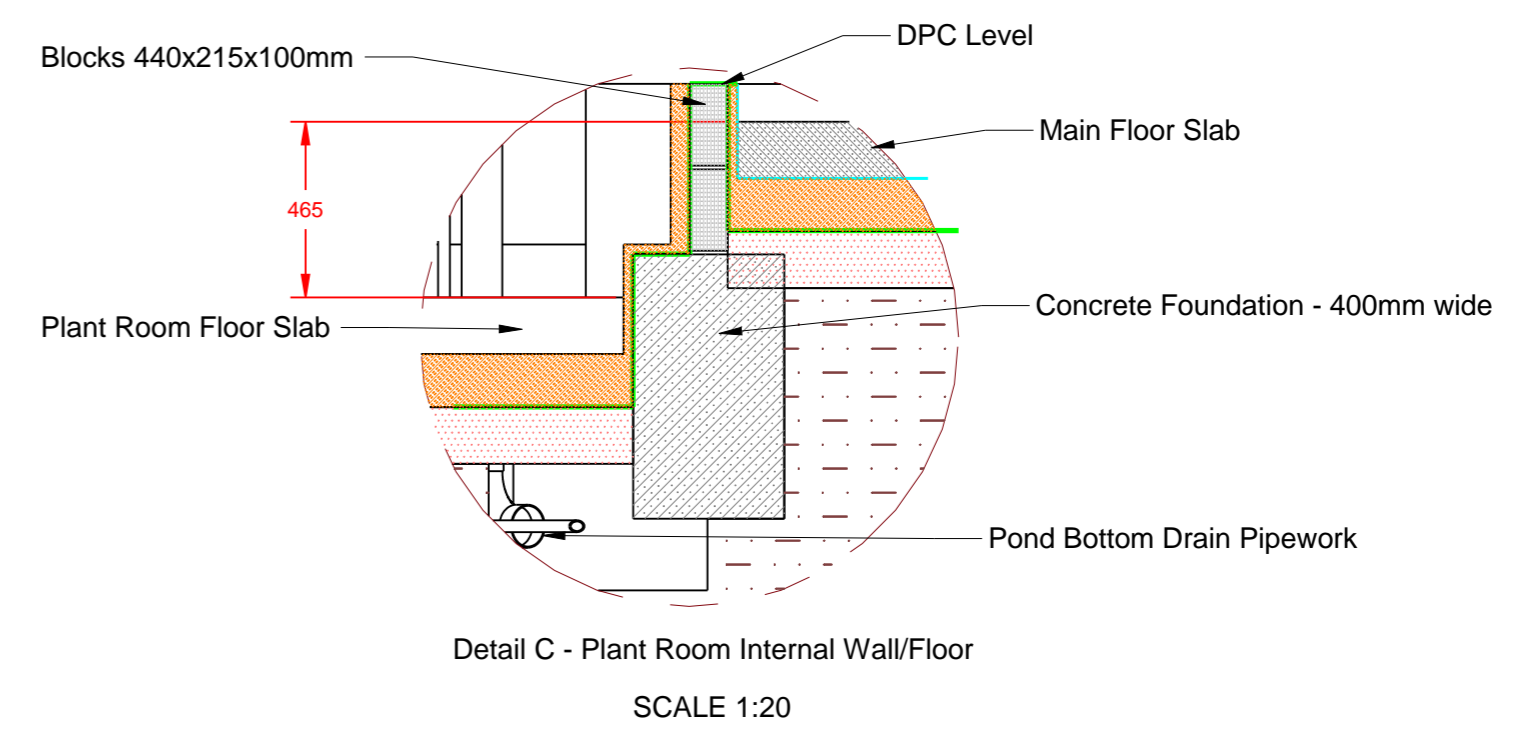
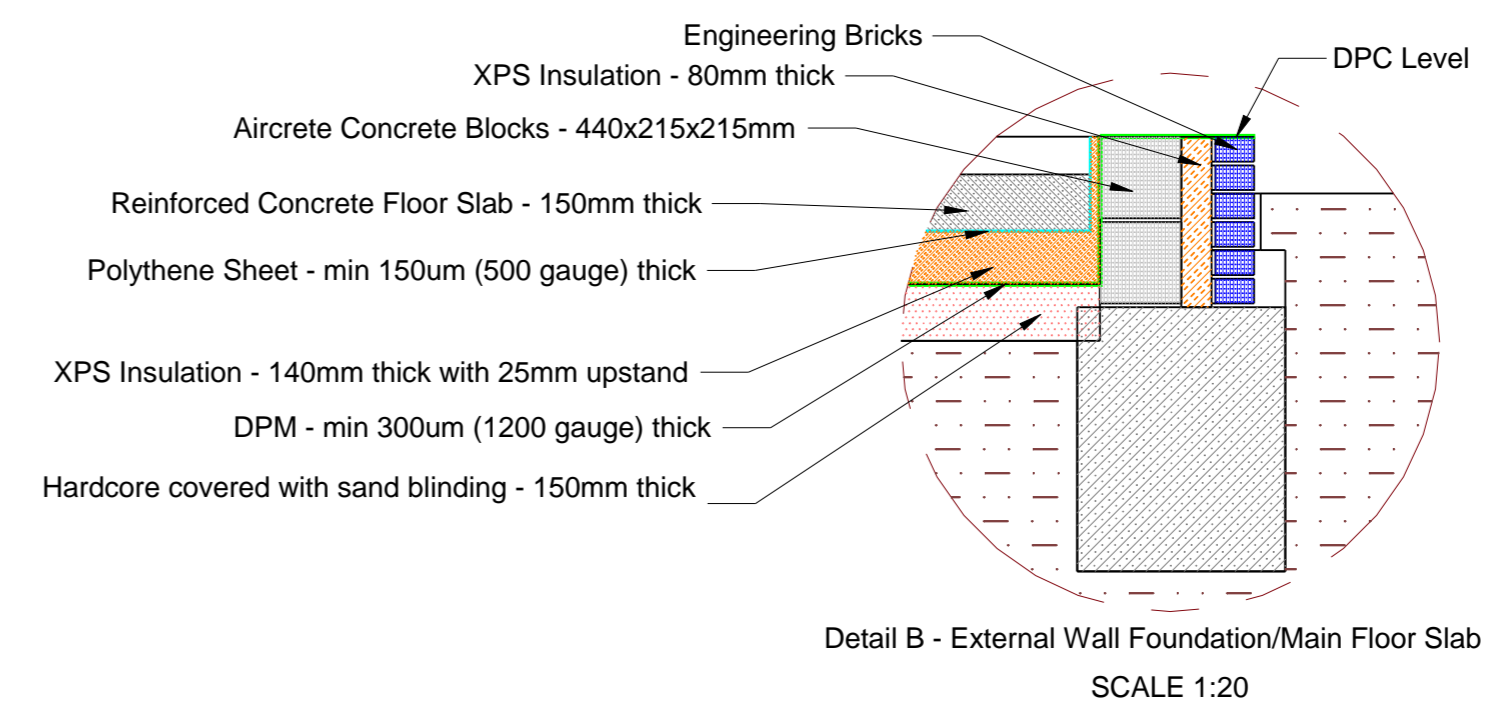
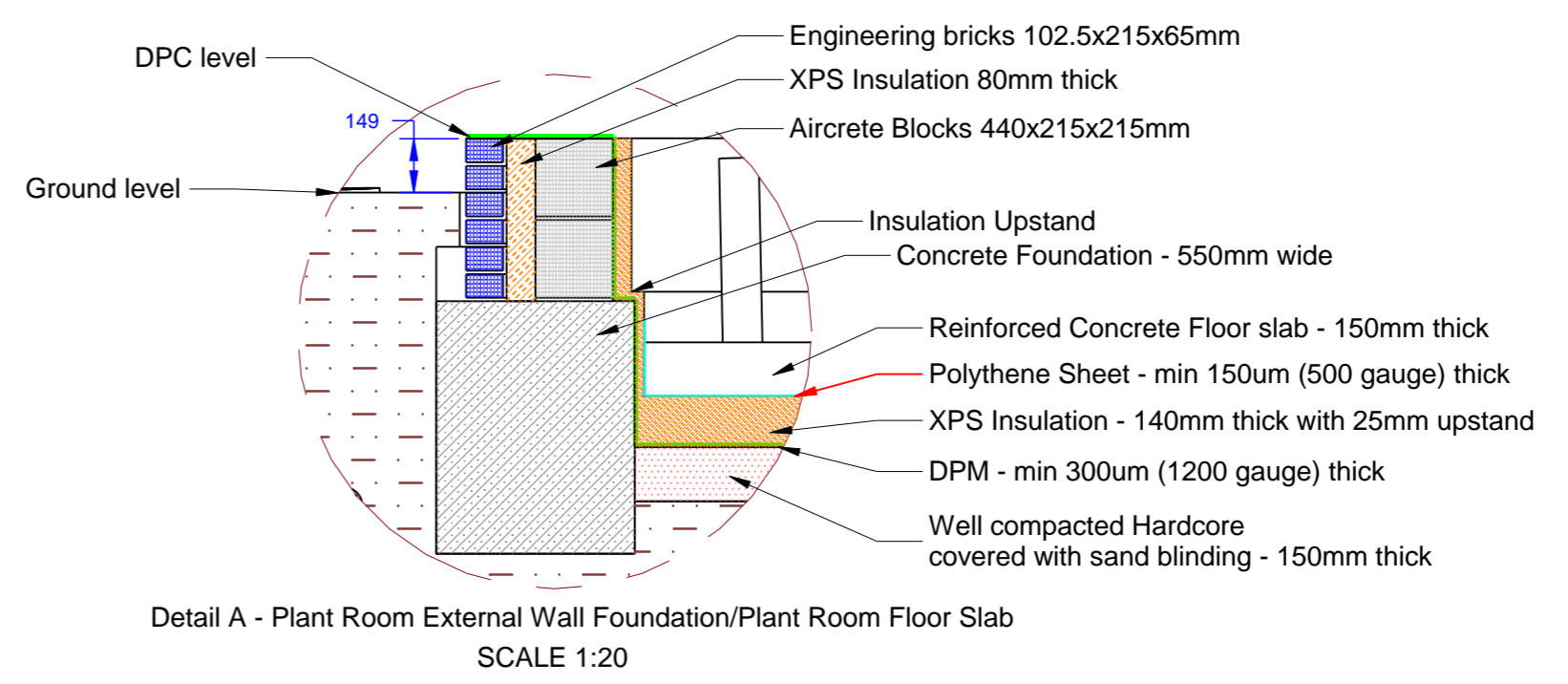
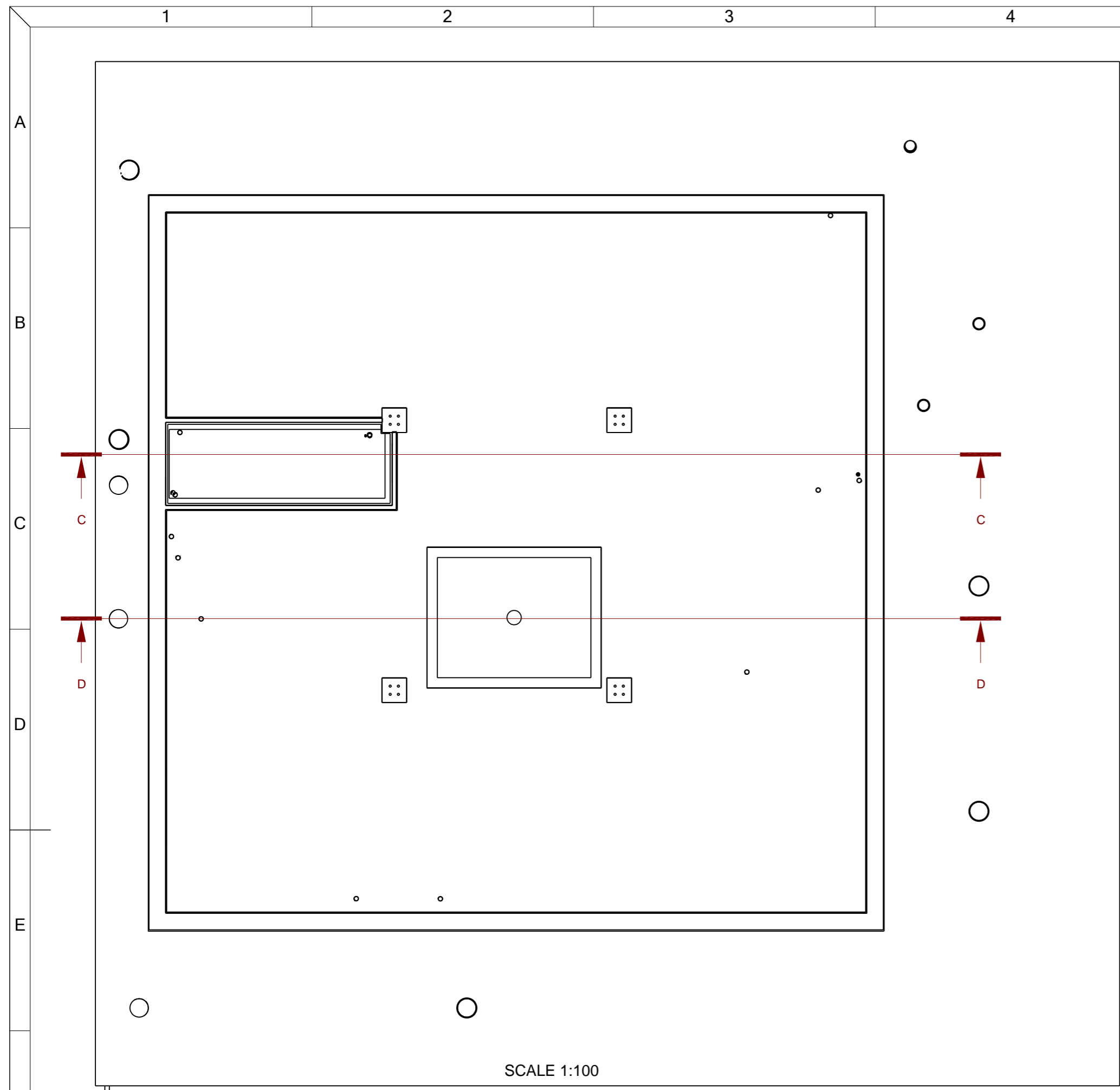


Section B - Pond-B - Pond  
SCALE 1:50

**Pipework Notes**  
 Protection Sleeve Required Through Foundation  
 100mm granular bed below and around pipework  
 Any Pipework within 1m of foundations requires concrete fill upto bottom of foundation pour  
 Pond Bottom Drain Pipework incased inside Pond Reinforced Concrete Floor Slab  
 (See H100-DP-01 Drainage Plan Drawing for more details)

Revision History			Units: mm	Third Angle Projection	Rev No.: 3	Date: 02/07/2019	Title: Groundworks - First Concrete Pour
Rev No.	Date	Changes	Scale: @A2	Drawn: JES	Checked: <chk>		
1A	02/05/2018	New Drawing	Sheet: 2 of 3	A2	Revision note: Updated DPM location		
2	26/06/2018	Updated drain locations					
3	02/07/2019	Updated DPM location					

Drawing Number: H100-GW-02



Revision History			Units: mm	Third Angle Projection	Rev No.: 2	Date: 02/07/2019	Title: Groundworks
Rev No.	Date	Changes	Scale: @A2	Drawn: JES	Checked: <chk>	Drawing Number: H100-GW-03	
1A	02/05/2018	New Drawing	Sheet: 3 of 3	A2	Revision note: Updated DPM location		
2	26/06/2018	Location of drains					
3	02/07/2019	Updated DPM location					

© 2018