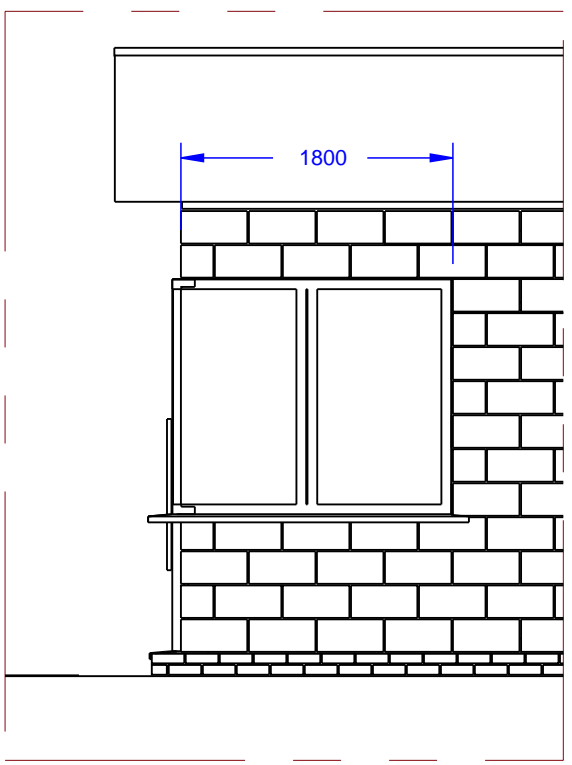
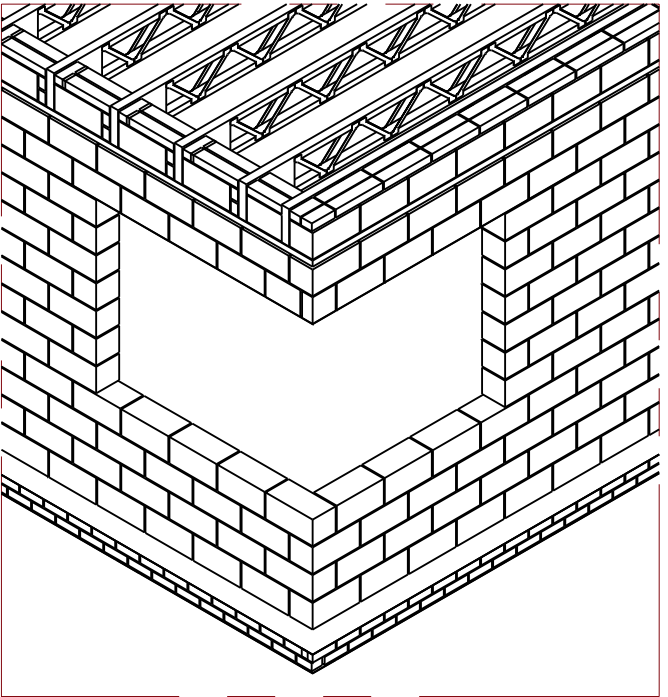


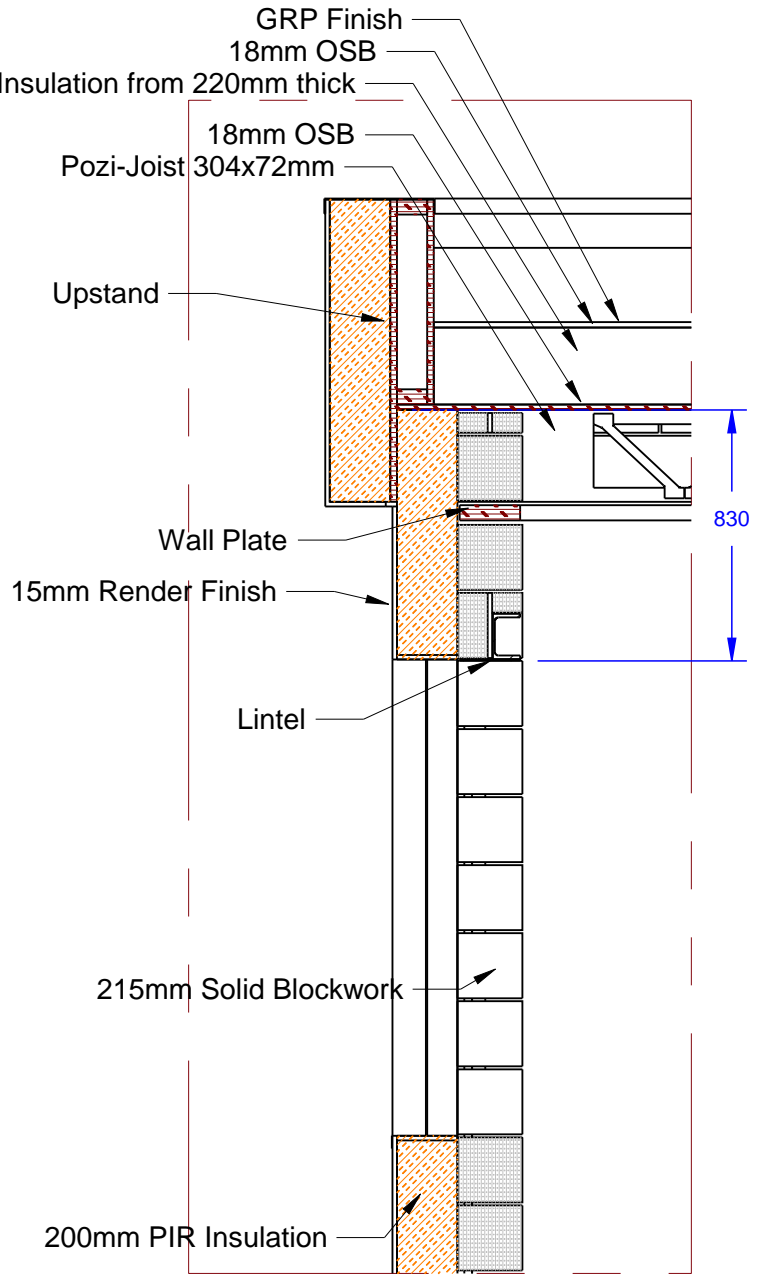
Detail A - Front View
SCALE 1:50



Detail B - Side View
SCALE 1:50



Detail C - Wall/Roof Detail
SCALE 1:50



Detail D - Wall/Roof Structure
SCALE 1:25

PoziJoist - 304x72x5616mm - total - 25kg
Aircrete Blockwork - 440x215x215mm - 730 kg/m³

Calculated Weights over 2025mm opening
830mm of Wall - 260.95kg or 2560N
Upstand 1m tall - 123.29kg or 1209N
Roof Structure - 338.42kg or 3320N
Snow Load - 8529N
Total - 15.6kN

Calculated Weights over 1800mm opening
830mm of Wall - 231.96kg or 2276N
Upstand 1m tall - 10959kg or 1075N
Roof Structure - 164.34kg or 1612N
Snow Load - 4860N
Total - 9.8kN

Revision History

Rev No.	Date	Changes
1A	27/04/2018	New Drawing

Units: mm

Third Angle Projection

Rev No.: 1A

Date: 27/04/2018

Title: Corner Window

Scale: @A3

Sheet: 1 of 1

A3

Drawn: JES

Checked: <chk>

Revision note: New Drawing

Drawing Number: H100-CW-01